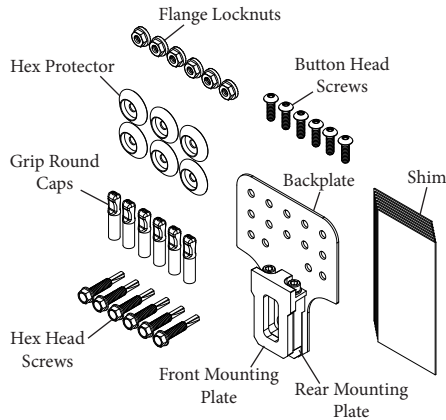


STP Inverted Wide Flange Bracket (Kit 116263)

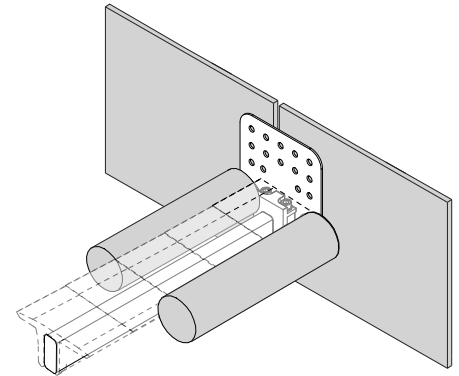
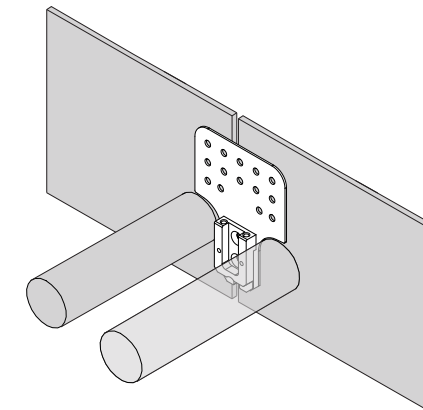
Instructions for Installation

Reference STP IOM (X4064 and X6041) for full installation details. This sheet is only to guide the installation of the optional mounting bracket. Kit 116263 contains two inverted wide flange brackets and mounting hardware.

Typical applications include 4-10" horizontal transfers where a bolted connection is desired or required, and there is little or no access beneath the transfer.

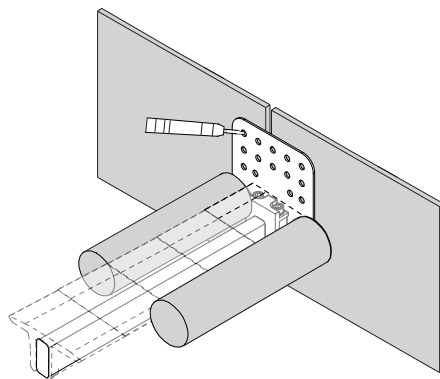


STP Inverted Wide Flange Bracket (Kit 116263).

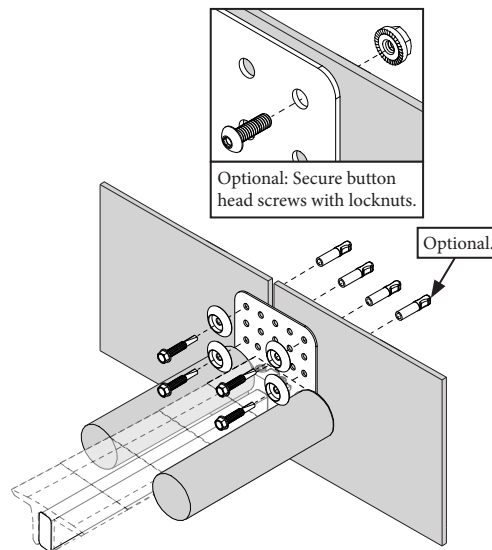


1. Identify conveyor transfer and ensure area where the bracket will be installed is clear of obstructions. Measure the gap width and trim the support bar as required, following the procedures in X4064 and X6041.

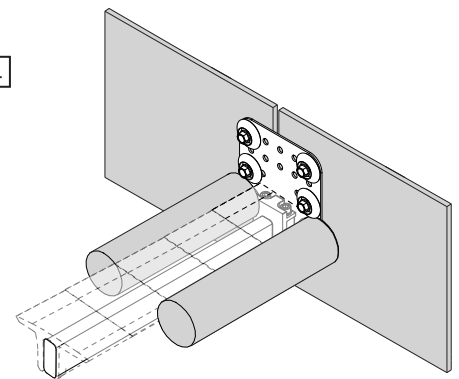
2. Install Segments Transfer Plates along the length of the support bar, trimming segments as necessary. Insert each end of the bar into the Inverted Wide Flange Bracket. Place the full assembly into the gap, making sure everything is properly aligned between the belts.



3. Identify the bracket holes to be used for mounting and verify that there are no interferences behind the structure. Use a center punch to mark holes and seat the drill bit.



4. Drill the first hole with a 1/8" (3.2mm) drill bit. Fasten the bracket using at least two self-tapping screws and hex head protector washers. Grip round caps are optional. Repeat for additional holes and opposite bracket.



5. Once at least four fasteners are in place and final clearance between belt and segments are confirmed, tighten all fasteners until the bracket seats tight against the conveyor side wall. Refer to IOMs X4064 and X6041 to finish the installation, including adding shims between backplate and inner mount as required for vertical adjustment.

Visit www.flexco.com for other Flexco locations and products, or to find an authorized distributor.